

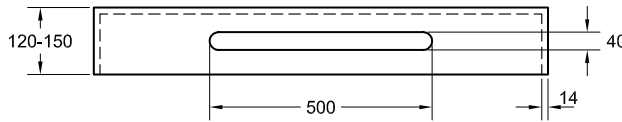
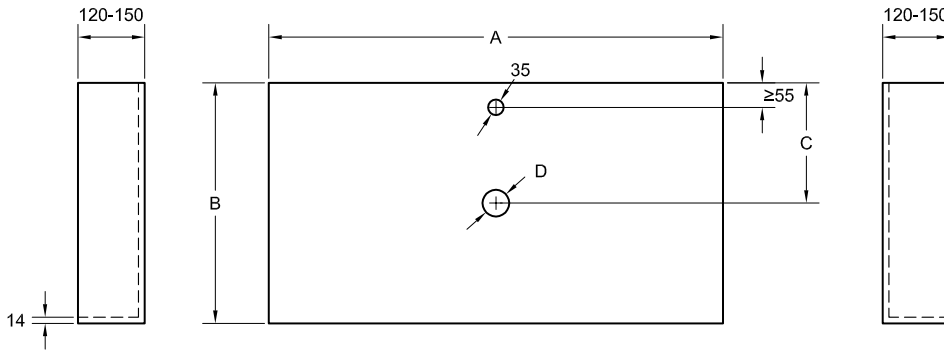
**PIZARRA | LISO**  
A 600-2000 | B 400-600



15 Kg / ML

<p>QUAREX Resin + Mineral fillers + Coating</p>	<p>5 YEARS GUARANTEE</p>	<p>Coating with excellent resistance to hydrolysis.</p>	<p>High coating UV resistant.</p>
<p>SUPERIOR HARDNESS coating (&lt;0.01 mm according to UNE EN 14688; maximum allowed 0.1 mm).</p>	<p>Antibacterial treatment R&lt;2 ISO 22196.</p>	<p>Special cuts available. It can be cut on site by diamond saw</p>	<p>Consult installation manual.</p>

Technical specifications are subject to change without notice. Dimensional tolerances +/-5mm.

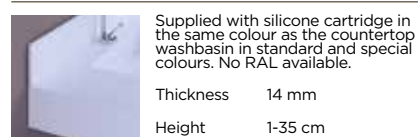


	No faucet hole	With faucet hole
A	600-2000	600-2000
B	400-600	400-600
C	to be defined by the customer	
D	to be defined by the customer	

STANDARD COLOURS



BACKSPLASH



TOWEL RACK



FAUCET HOLE AND OVERFLOW AVAILABLE ON REQUEST WITH NO EXTRA COST

WALL BRACKETS AND FIXINGS INCLUDED

SPECIAL COLOURS



RAL



NCS

